

Discover the best

**Pentel**

---

Hand Lettering Font  
Vol. 6

---



**Pentel** Arts

## Hand Lettering Font Vol. 6

Hand lettering can be used to make greeting cards and other small messages in a stylish way. Volume 6 explains how to write in Copperplate script, a popular style in calligraphy. This traditional and elegant typeface adds a gorgeous impression to your message. With **Colour Brush**, express the flow in the characters.

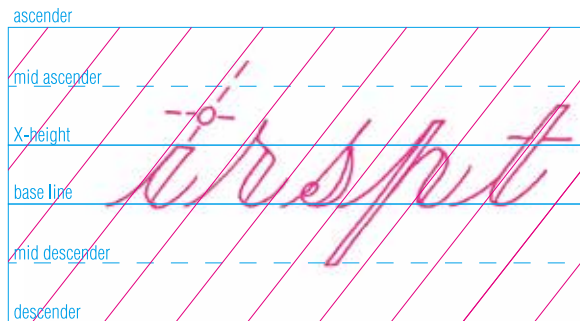
### How to Write Hand Lettering Font Vol. 6

1. The dot of **i j** is as wide as the shade it produces them

2. **r s p** are higher letters

3. **p** is a mid descender letter

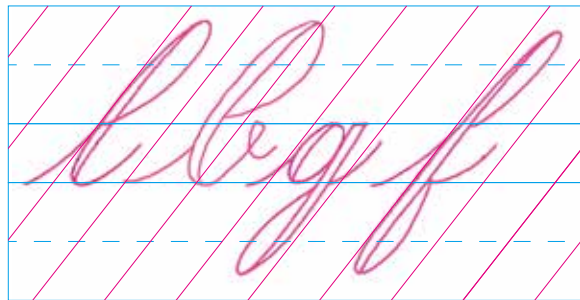
4. **t** is a mid ascender letter



5. Looped ascenders as **l b h k** are higher letters

6. Looped descenders are longer almost 3 spaces or a little less

7. **f** is the longest letter of the alphabet



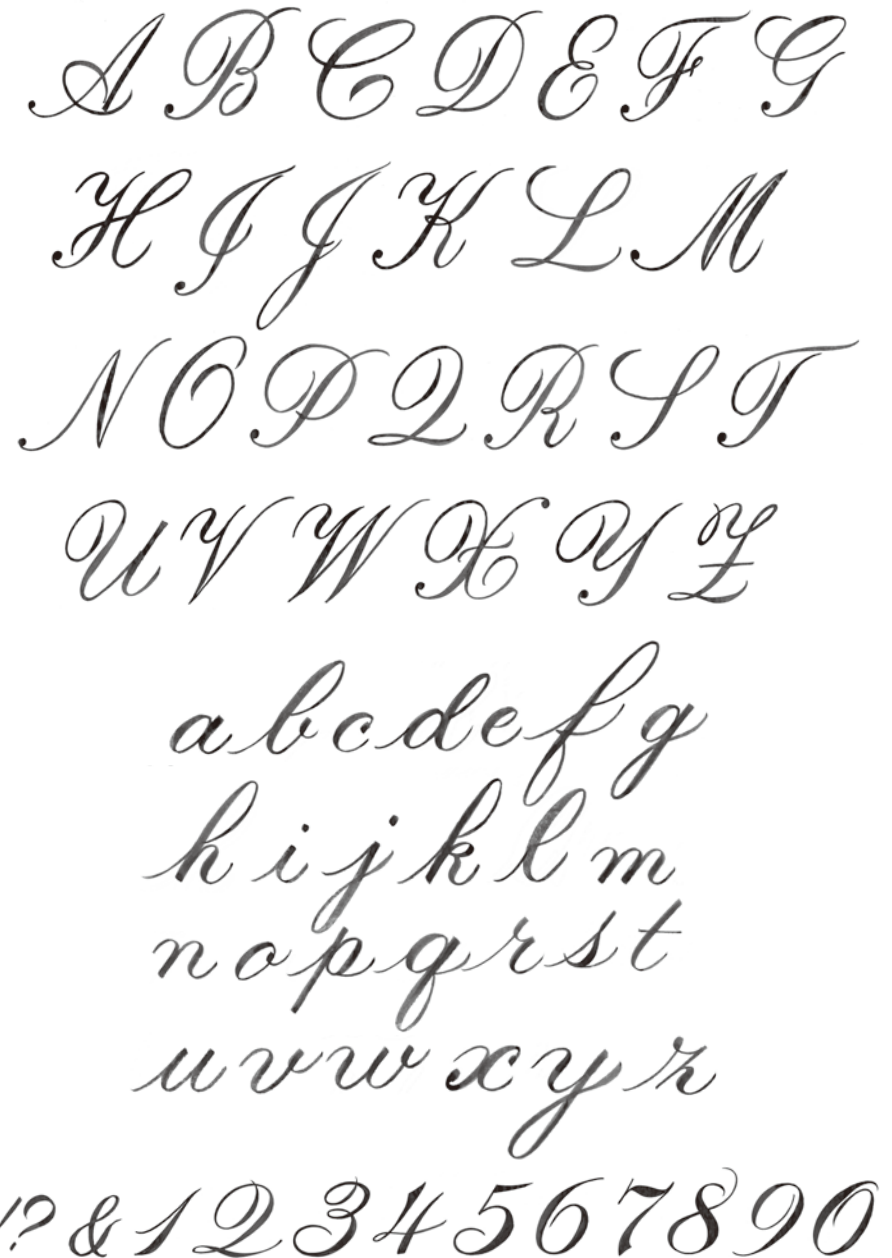
8. The ratio of the oval we use for all letters is one wide, two high.

9. Capitals are high like looped ascenders

10. Numbers are mid ascenders



## Hand Lettering Font Vol. 6 Font Sample

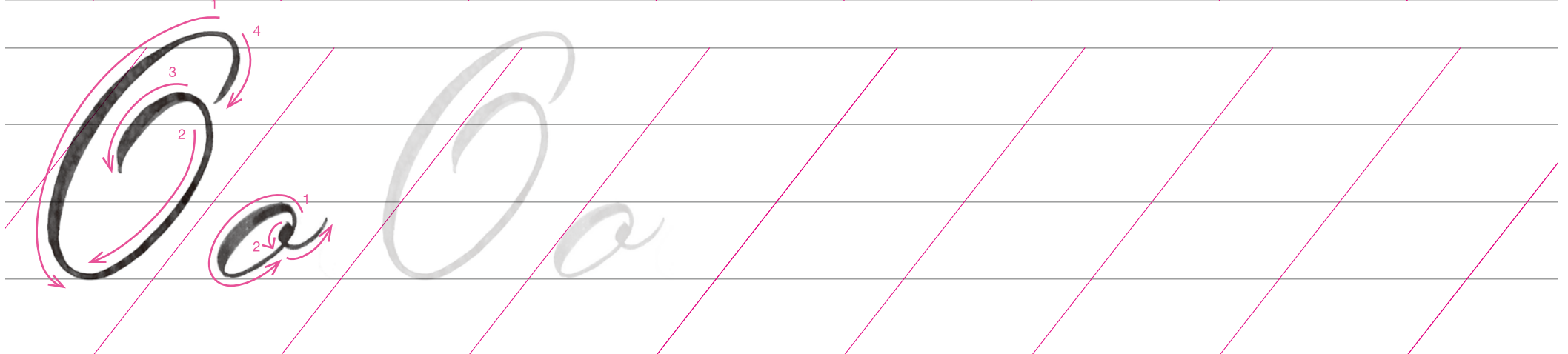












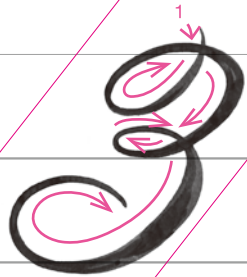
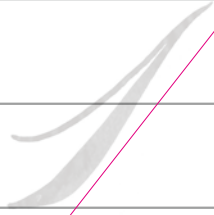
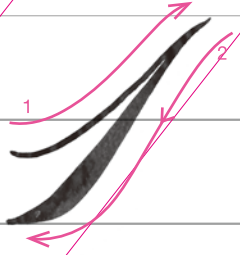












4

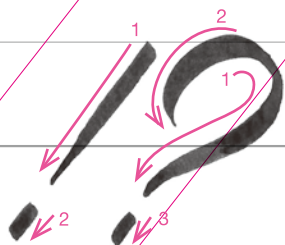
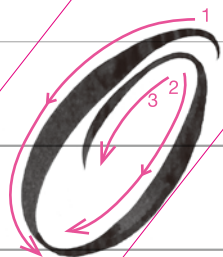
5

6

This row is designed for practicing the cursive letter '7'. It features a set of four horizontal lines (top, midline, baseline, and descender line) and a series of diagonal pink lines slanting from the top-left to the bottom-right. On the left side, a solid black '7' is shown with three numbered arrows indicating the stroke order: 1 (downward curve), 2 (top curve), and 3 (downward curve). To its right is a light gray shadow of the same letter. The rest of the row is left blank for practice.

This row is designed for practicing the cursive letter '8'. It features a set of four horizontal lines and diagonal pink lines. On the left, a solid black '8' is shown with three numbered arrows indicating the stroke order: 1 (downward curve), 2 (upward curve), and 3 (downward curve). To its right is a light gray shadow of the letter. The rest of the row is blank for practice.

This row is designed for practicing the cursive letter '9'. It features a set of four horizontal lines and diagonal pink lines. On the left, a solid black '9' is shown with two numbered arrows indicating the stroke order: 1 (top curve) and 2 (downward curve). To its right is a light gray shadow of the letter. The rest of the row is blank for practice.



Congratulation

Congratulation



■ Advanced Practice

